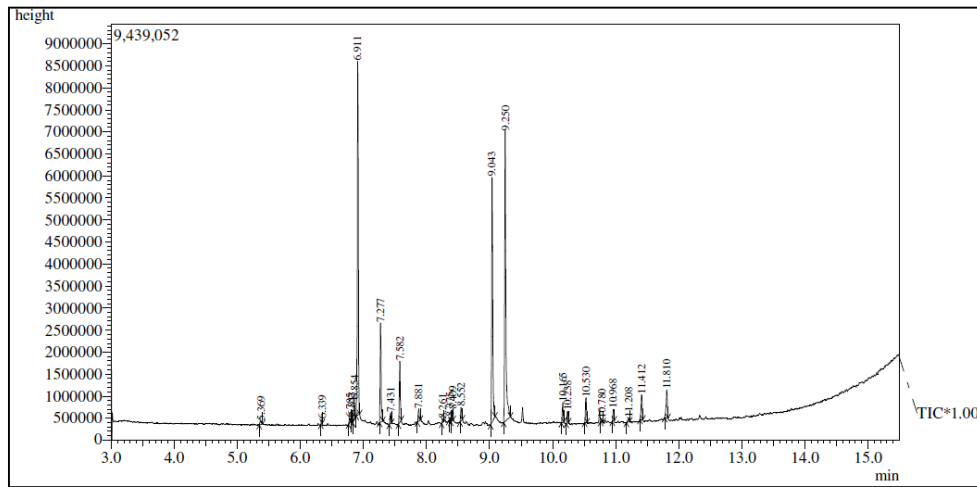
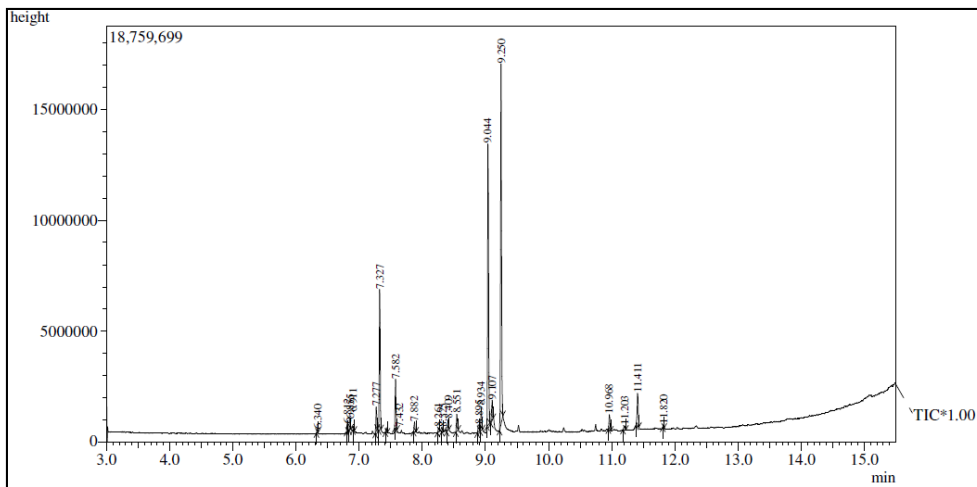


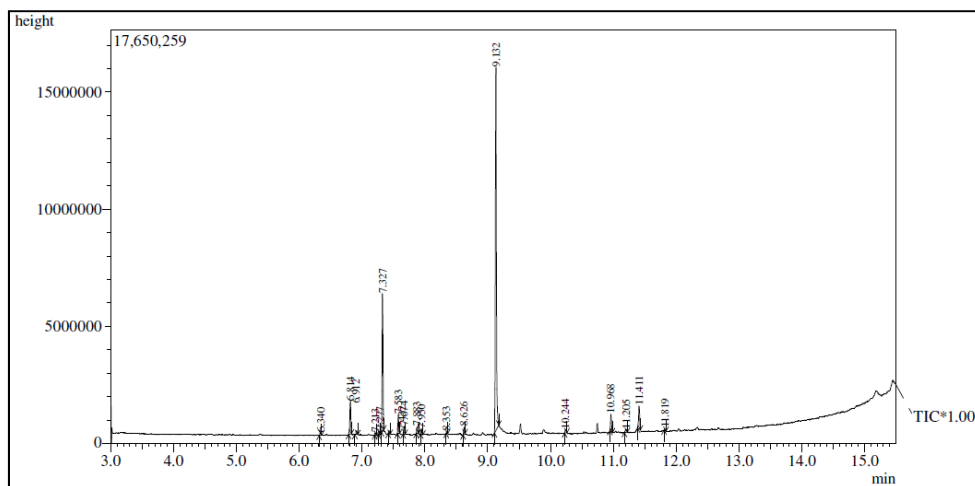
## SUPPLEMENTARY MATERIAL



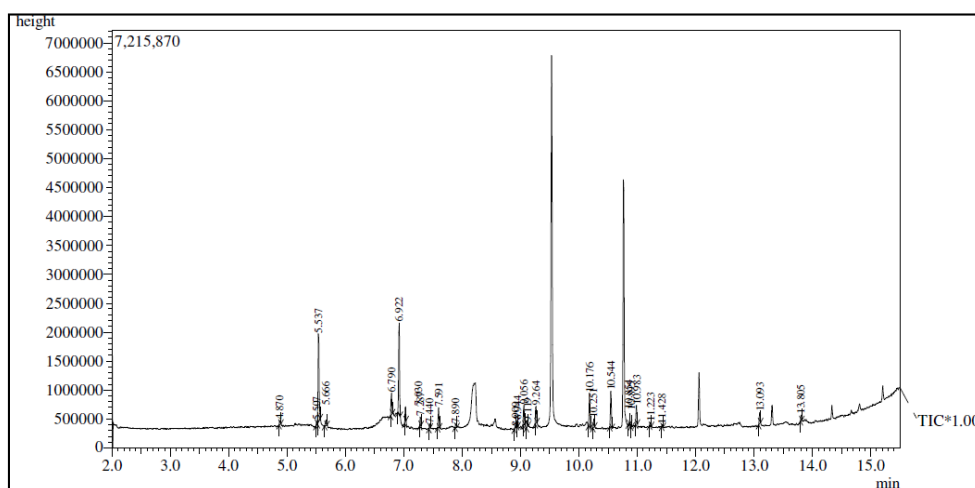
**Figure 1S.** Chromatogram of GC-MS on the leaves of *L. alba* chemotype I by hydrodistillation



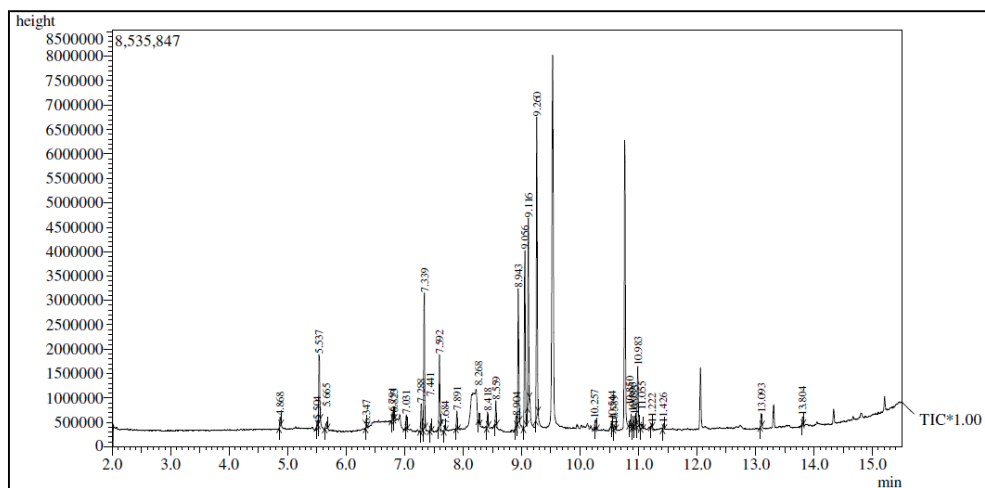
**Figure 2S.** Chromatogram of GC-MS on the leaves of *L. alba* chemotype II by hydrodistillation



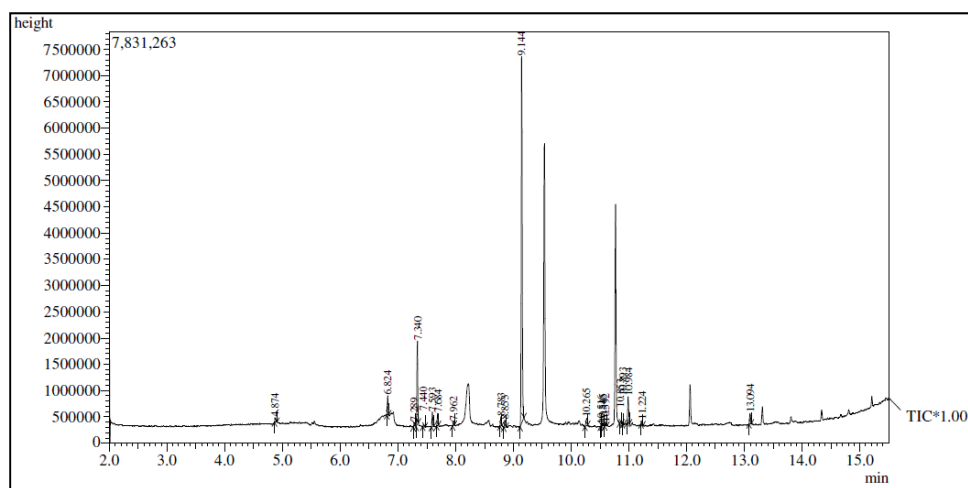
**Figure 3S.** Chromatogram of GC-MS on the leaves of *L. alba* chemotype III by hydrodistillation



**Figure 4S.** Chromatogram of GC-MS on the leaves of *L. alba* chemotype I by HS-SPME



**Figure 5S.** Chromatogram of GC-MS on the leaves of *L. alba* chemotype II by HS-SPME



**Figure 6S.** Chromatogram of GC-MS on the leaves of *L. alba* chemotype III by HS-SPME