

MATERIAL SUPLEMENTAR

A Figura 1S apresenta os espectros de RMN¹H para as bioglicerinas A, B, C, D, E e F.

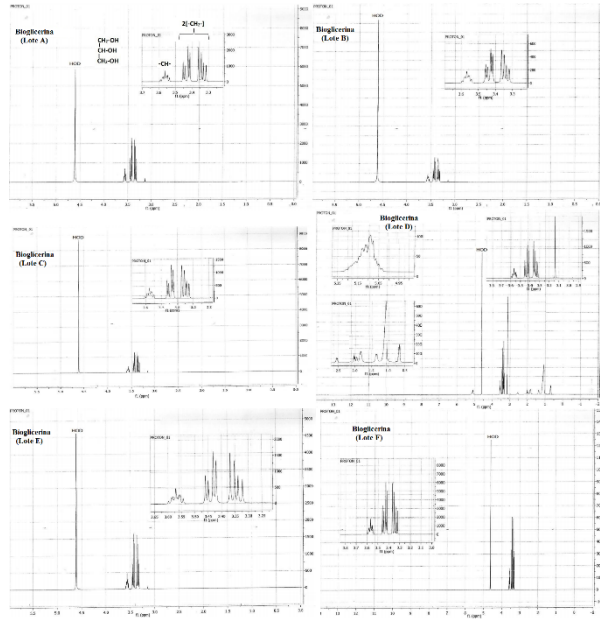


Figura 1S. Espectros de RMN¹H para as bioglicerinas lotes A, B, C, D, E e F

A Figura 2S (A) e (B) apresenta os cromatogramas obtidos por CG/DIC e CG/EMIT, respectivamente, para as bioglicerinas lotes A, B, C, D, E e F.

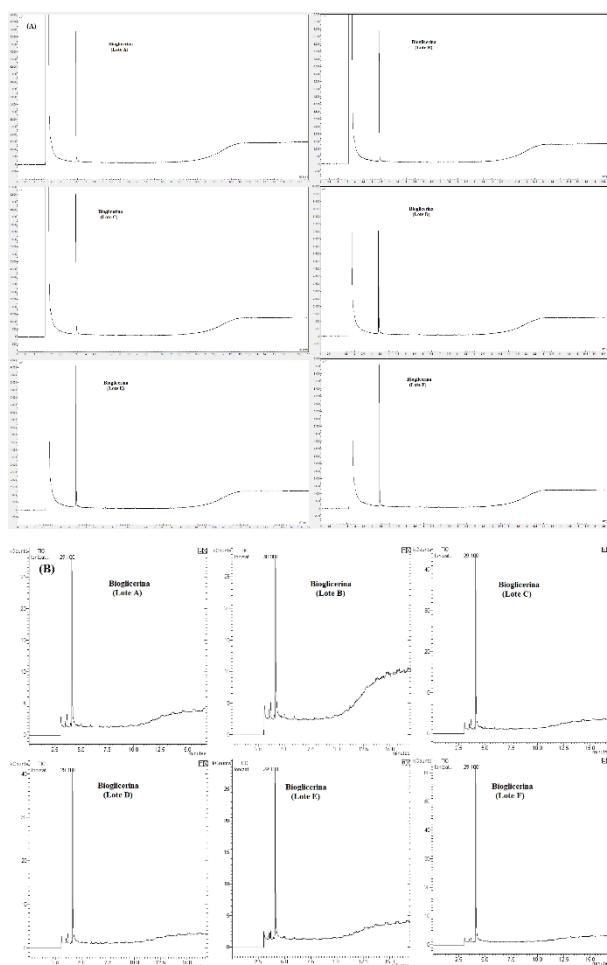


Figura 2S. (A) Cromatograma das bioglicerinas lotes A, B, C, D, E e F obtido por CG/DIC; (B) Cromatogramas da corrente total de íons das bioglicerinas lotes A, B, C, D, E e F obtidos por CG/EMIT

A Figura 3S (A) e (B) apresenta as curvas TGA/DTG das bioglicerinas lotes A, B e C em taxa de aquecimento de $10\text{ }^{\circ}\text{C min}^{-1}$ e $20\text{ }^{\circ}\text{C min}^{-1}$, respectivamente.

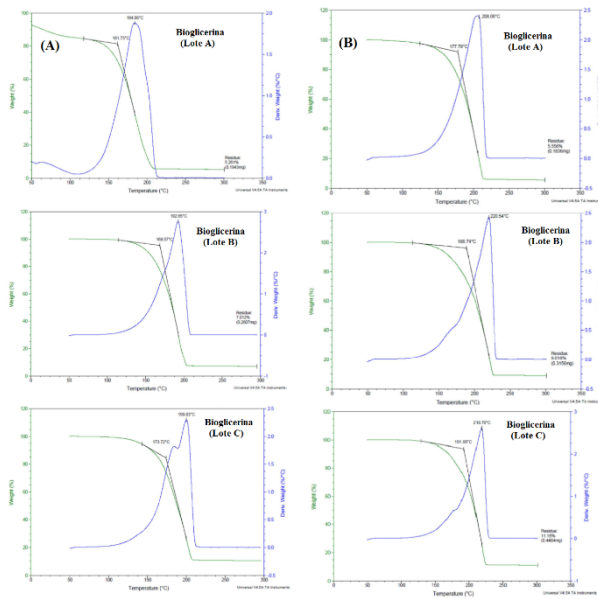


Figura 3S. Curvas TGA/DTG das bioglicerinas lotes A, B e C em taxa de aquecimento de (A) $10\text{ }^{\circ}\text{C min}^{-1}$ e (B) $20\text{ }^{\circ}\text{C min}^{-1}$