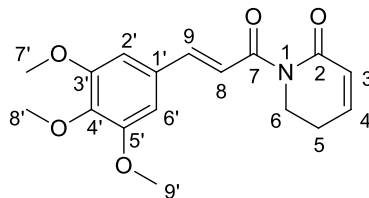


MATERIAL SUPLEMENTAR

Tabela 1S. Valores de deslocamento químicos para RMN (^1H , 300 MHz) e (^{13}C , 75 MHz) da amida piplartina (δ , CDCl_3) comparados com o da literatura



H	δ_{H}	δ_{H}^*	C	δ_{C}	δ_{C}^*
2	-	-	2	166,1	166,7
3	6,05 (dt, $J = 9,6$ e $1,5$ Hz)	6,02 (dt, $J = 9,7$ e $1,8$ Hz)	3	126,4	126,5
4	6,96 (dt, $J = 9,6$ e $4,1$ Hz)	6,95(dt, $J = 9,7$ e $4,2$ Hz)	4	147,5	146,4
5	2,49 (m)	2,45 (m)	5	24,6	25,2
6	4,05 (t, 2H, $J = 6,6$ Hz)	4,04 (t, $J = 6,3$)	6	41,7	42,1
7	-	-	7	169,1	169,7
8	7,43 (d, 1H, $J = 15,5$ Hz)	7,41 (d, $J = 15,6$)	8	121,2	121,7
9	7,68(d, 1H, $J = 15,5$ Hz)	7,68 (d, $J = 15,6$)	9	143,9	144,5
1'	-	-	1'	130,6	131,3
2'	6,81 (s, 1H)	6,80 (s)	2'	105,5	106,0
3'	-	-	3'	153,5	154,1
4'	-	-	4'	145,5	144,5
5'	-	-	5'	153,5	154,1
6'	6,81 (s, 1H)	6,80 (s, 1H)	6'	105,5	106,0
7'	3,89 (s, 3H)	3,88 (s, 3H)	7'	56,2	56,6
8'	3,87 (s, 3H)	3,87 (s, 3H)	8'	61,2	61,5
9'	3,89 (s, 3H)	3,88 (s, 3H)	9'	56,2	56,6

Duh *et al.*¹

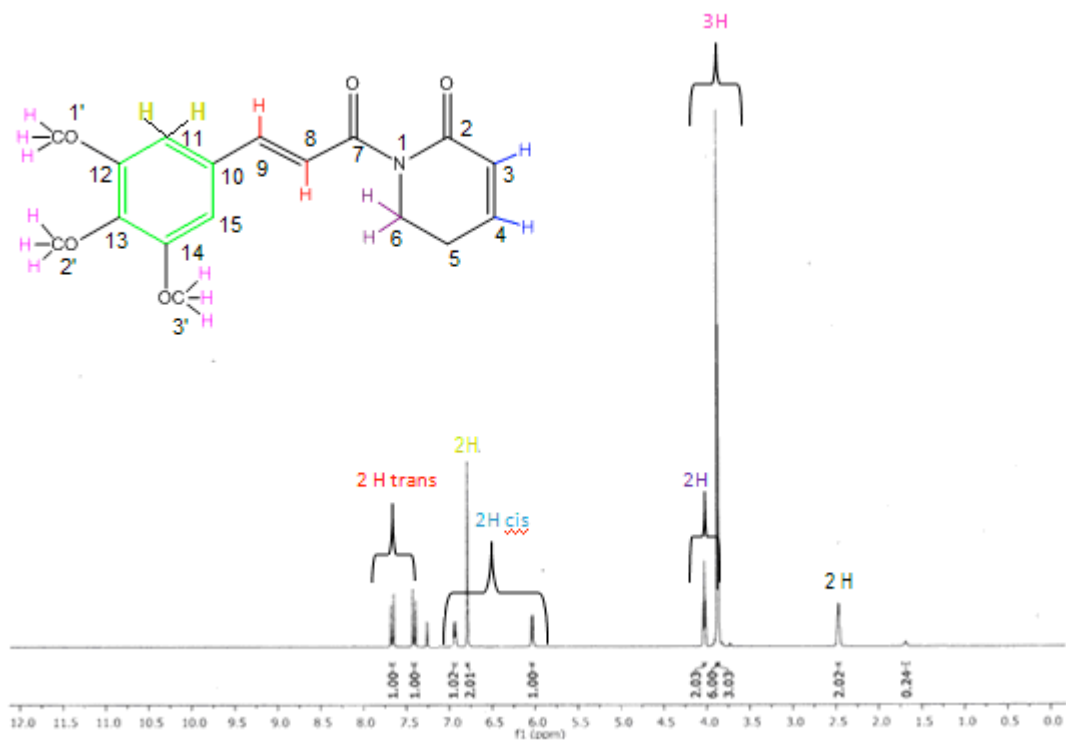


Figura 1S. Espectro de RMN ^1H (300 MHz, CDCl_3) do ligante piplartina

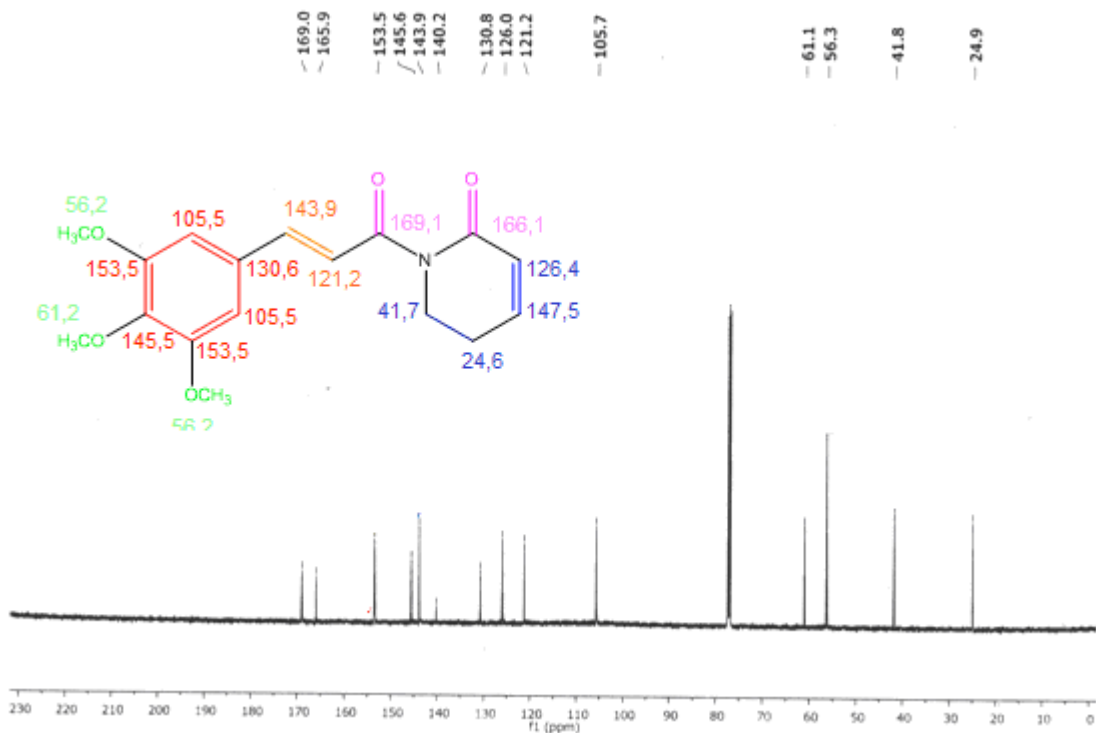


Figura 2S. Espectro de RMN de ^{13}C (75 MHz, CDCl_3) do ligante piplartina

REFERÊNCIAS

1. Duh, C-Y.; Wu, Y-C.; Wang, S-K.; *Phytochemistry* **1990**, *29*, 2689.