

MATERIAL SUPLEMENTAR

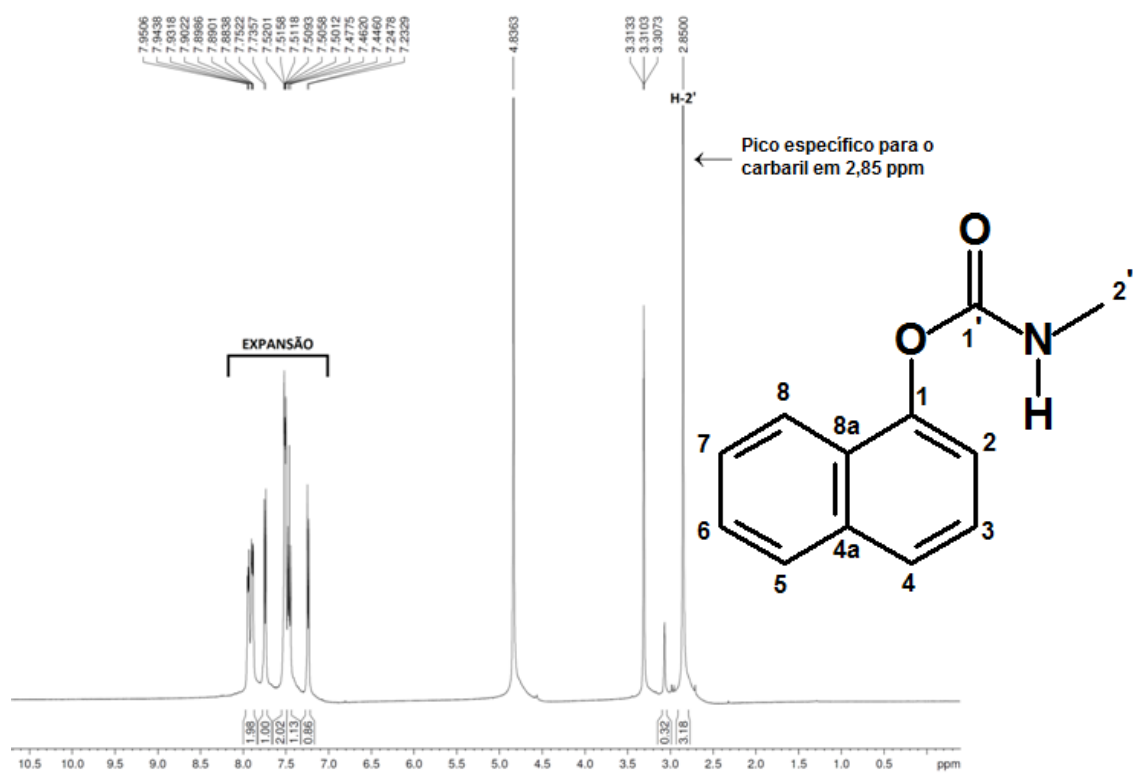


Figura 1S. Espectro de RMN ^1H do carbaryl (Metanol deuterado/500 MHz)

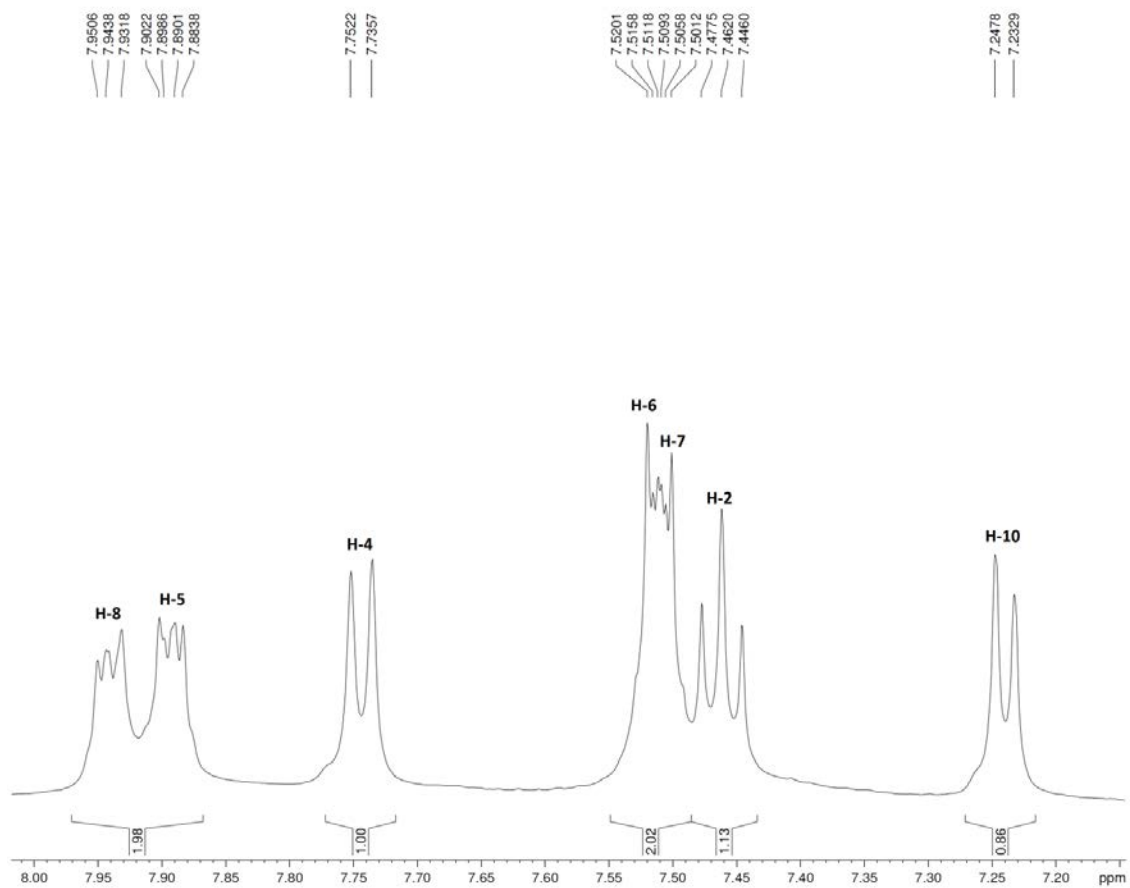


Figura 2S. Expansão do espectro de RMN ^1H do carbaril (Metanol deuterado/500 MHz)

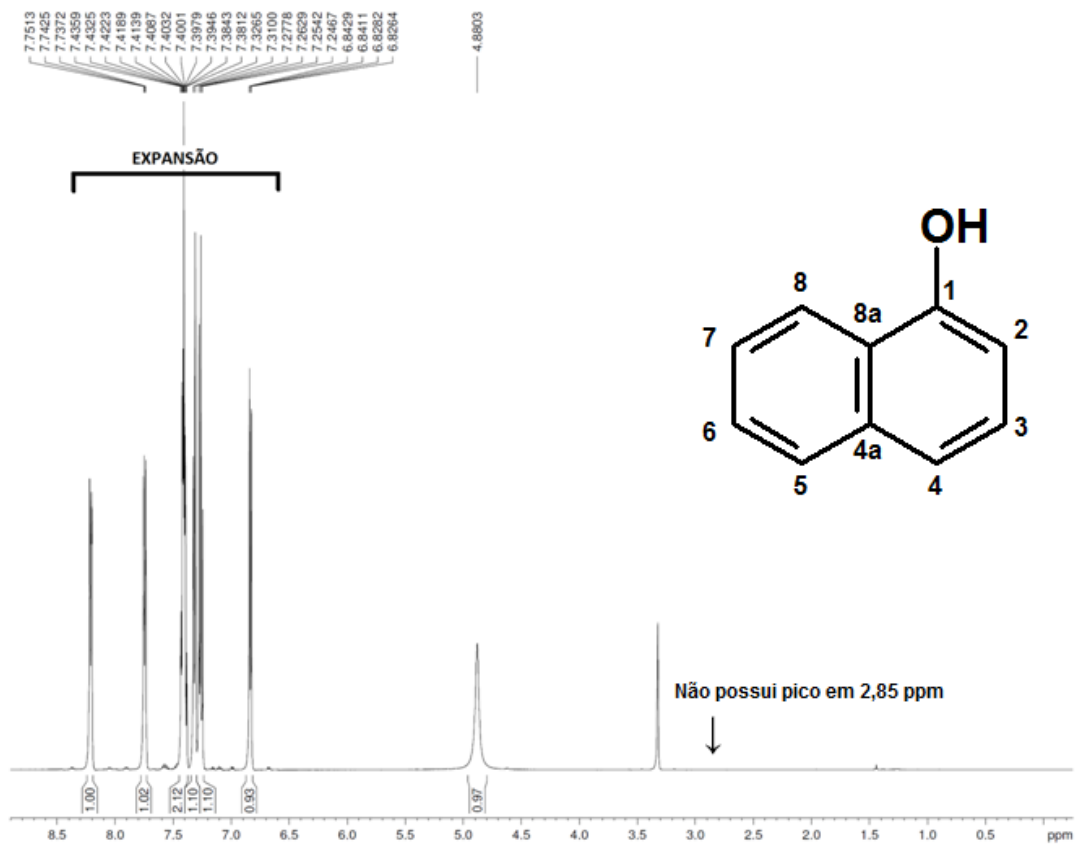


Figura 3S. Espectro de RMN ^1H do 1-naftol (Metanol deuterado/500 MHz)

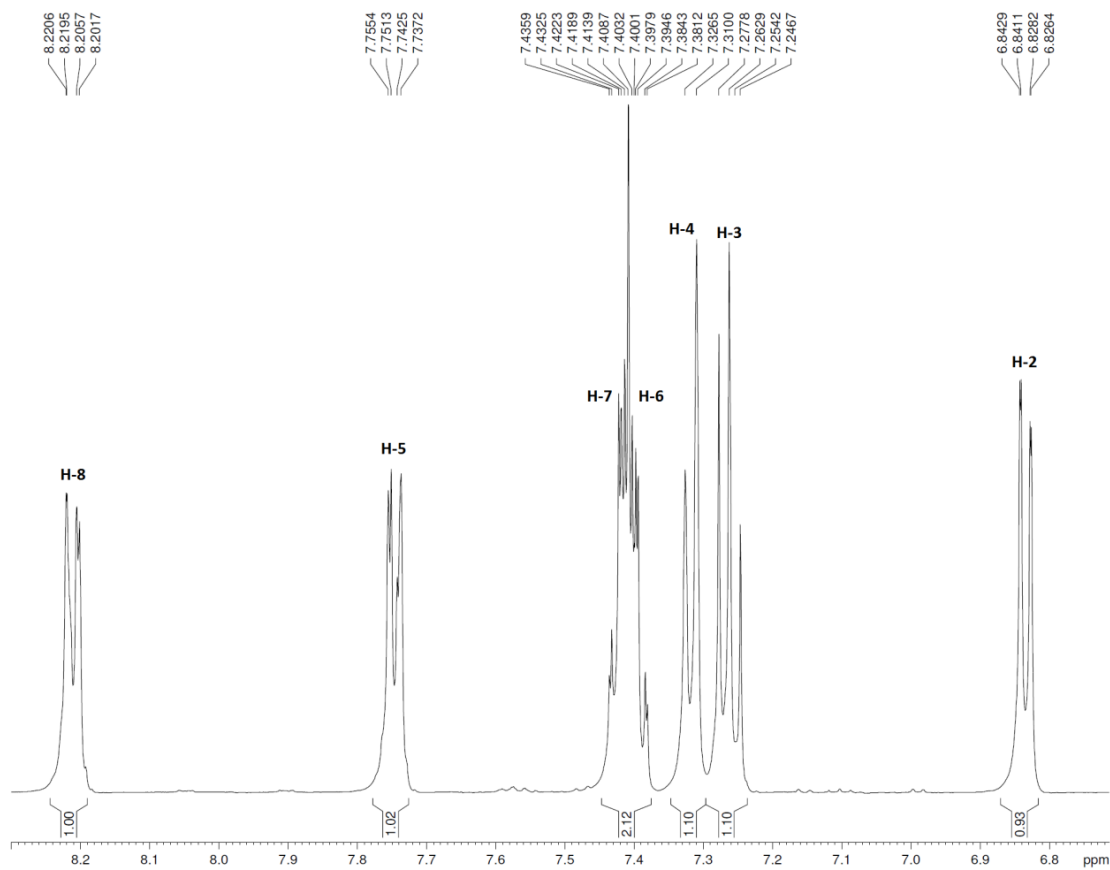


Figura 4S. Expansão do espectro de RMN ^1H do 1-naftol (Metanol deuterado/500 MHz)

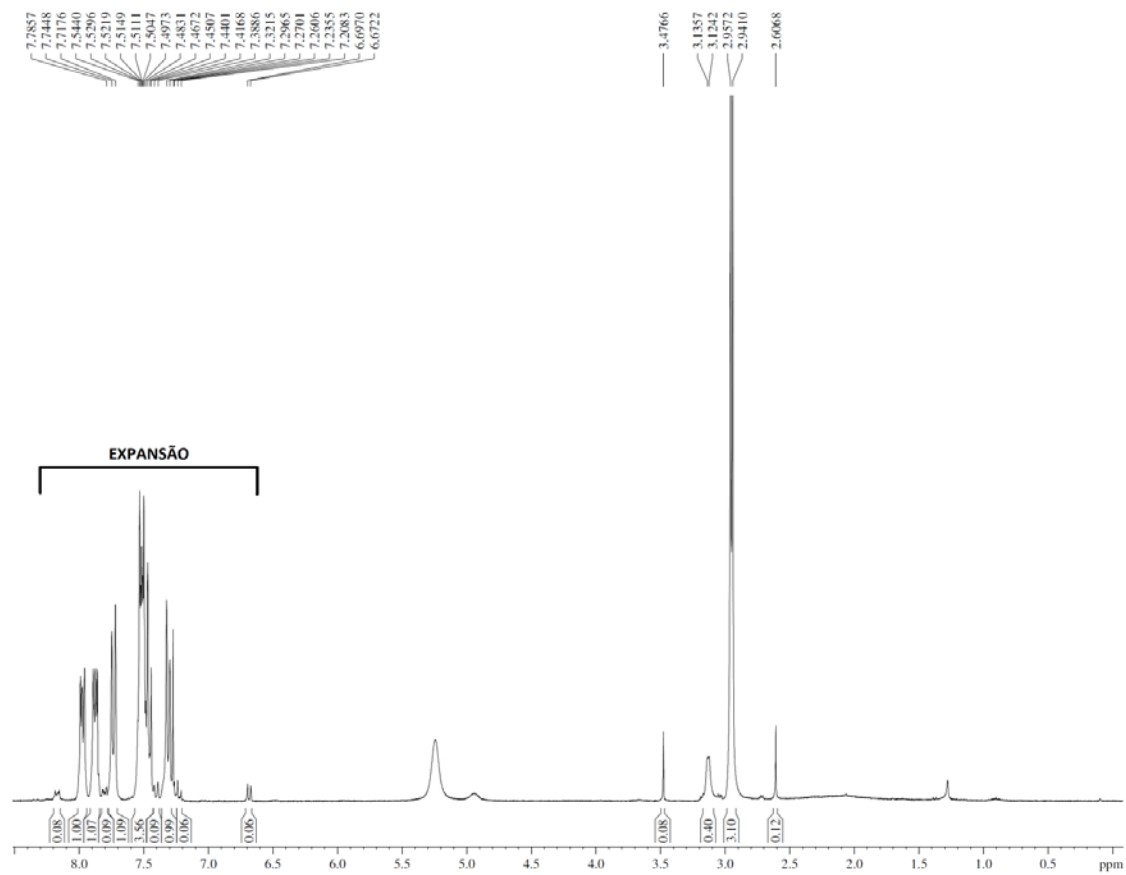


Figura 5S. Espectro de RMN ¹H do carbaril degradado (carbaril + 1-naftol) (Clorofórmio deuterado/300 MHz)

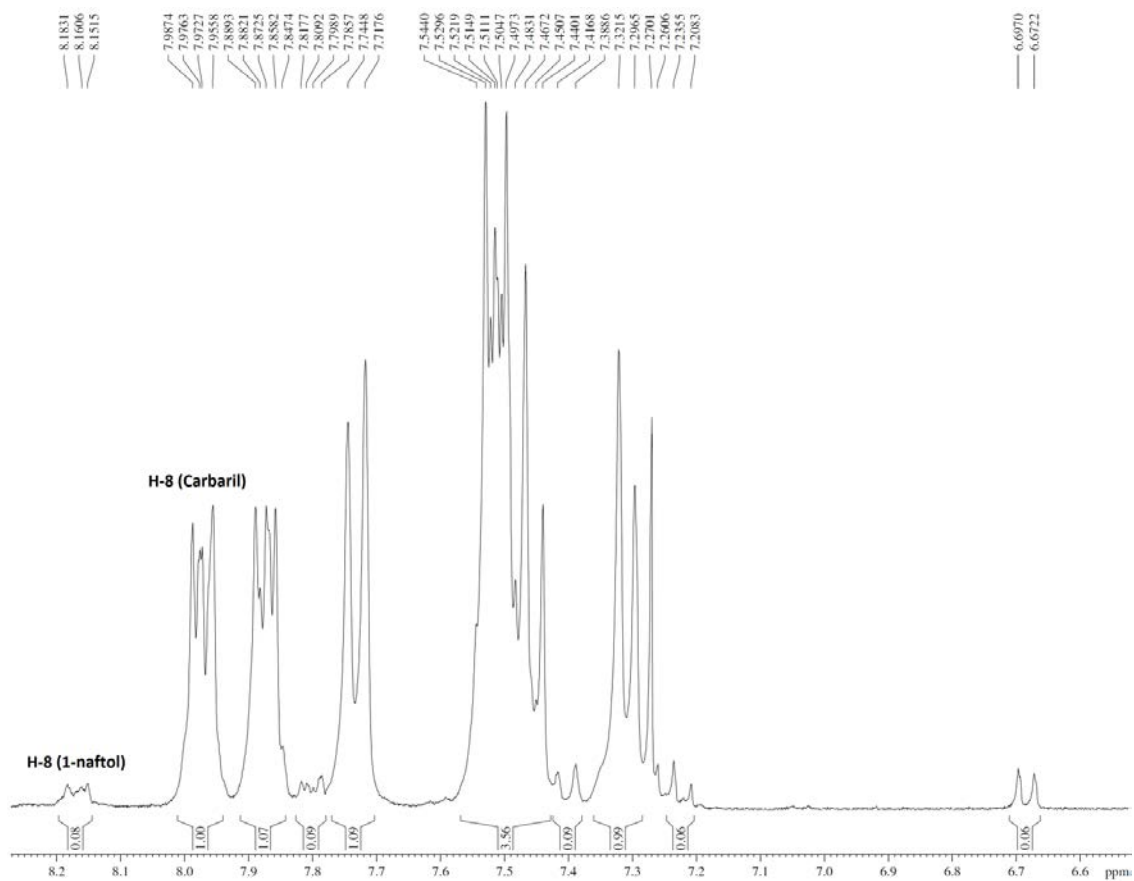


Figura 6S. Expansão do espectro de RMN ^1H do carbaril degradado (carbaril + 1-naftol) (Clorofórmio deuterado/300 MHz)