

A QUANTITATIVE VALIDATED METHOD USING LIQUID CHROMATOGRAPHY AND CHEMOMETRIC ANALYSIS FOR EVALUATION OF RAW MATERIAL OF *Maytenus ilicifolia* (SCHRAD.) PLANCH., CELASTRACEAE

Flávio Luís Beltrame*

Departamento de Ciências Farmacêuticas, Universidade Estadual de Ponta Grossa, Av. General Carlos Cavalcanti, 4748, 84030-900 Ponta Grossa - PR, Brasil

Rubiana Mara Mainardes e Najeh Maissar Khalil

Departamento de Farmácia, Universidade Estadual do Centro-Oeste. Rua Simeão Camargo Varela de Sá, 3, 85040-080 Guarapuava - PR, Brasil

Rosilene Aparecida Prestes, Alessandro Nogueira e Ivo Mottin Demiate

Departamento de Engenharia de Alimentos, Universidade Estadual de Ponta Grossa, Av. General Carlos Cavalcanti, 4748, 84030-900 Ponta Grossa - PR, Brasil

Quezia Bezerra Cass

Departamento de Química, Universidade Federal de São Carlos, CP 676, 13560-970 São Carlos - SP, Brasil

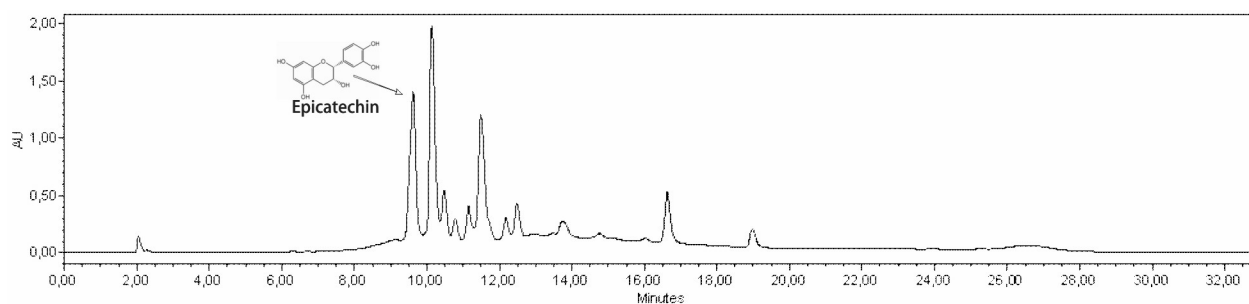


Figure 1S. Chromatographic profile of hydroalcoholic extract of *Maytenus ilicifolia*. Chromatographic conditions are described in the text. Sample sold as *espinheira santa* in Maringá city

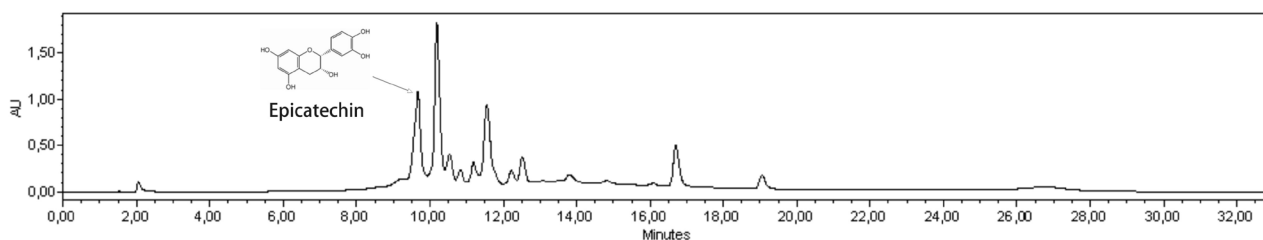


Figure 2S. Chromatographic profile of hydroalcoholic extract of *Maytenus ilicifolia*. Chromatographic conditions are described in the text. Sample sold as *espinheira santa* in Londrina city

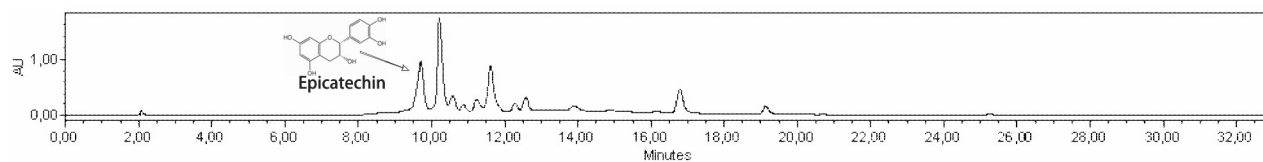


Figure 3S. Chromatographic profile of hydroalcoholic extract of *Maytenus ilicifolia*. Chromatographic conditions are described in the text. Sample sold as *espinheira santa* in Marialva city

*e-mail: flaviobeltra@gmail.com

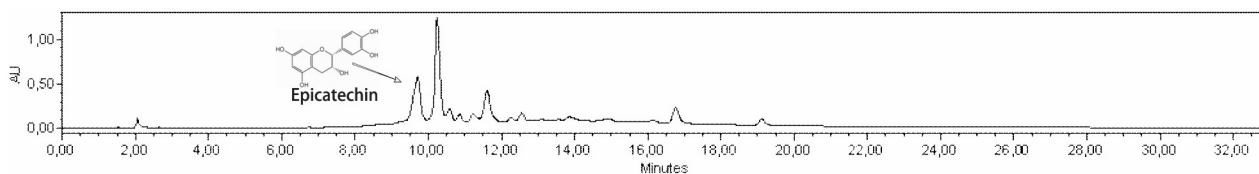


Figure 4S. Chromatographic profile of hydroalcoholic extract of *Maytenus ilicifolia*. Chromatographic conditions are described in the text. Sample sold as *espinheira santa* in Curitiba city

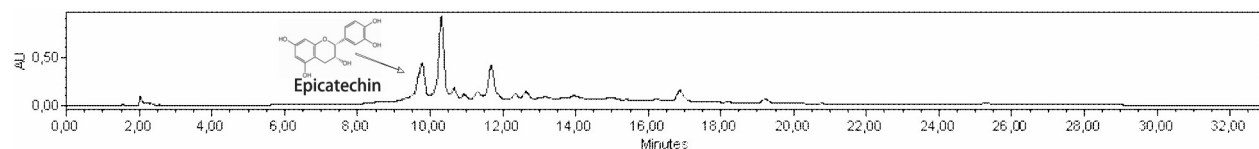


Figure 5S. Chromatographic profile of hydroalcoholic extract of *Maytenus ilicifolia*. Chromatographic conditions are described in the text. Sample sold as *espinheira santa* in Maringá city

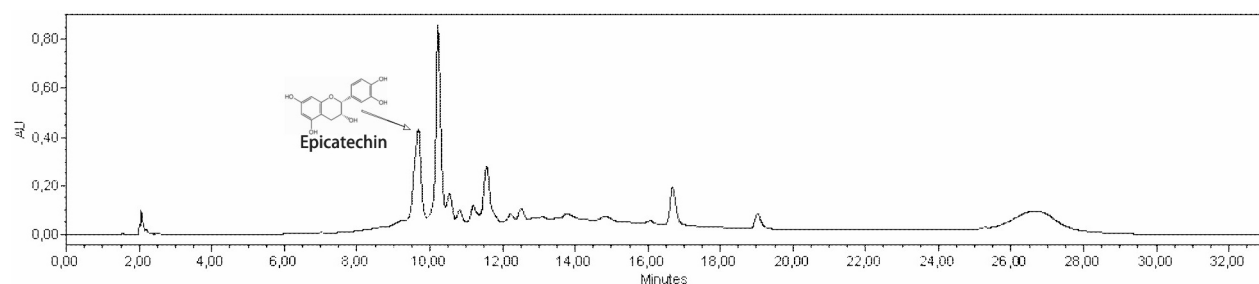


Figure 6S. Chromatographic profile of hydroalcoholic extract of *Maytenus ilicifolia*. Chromatographic conditions are described in the text. Sample sold as *espinheira santa* in Ortigueira city

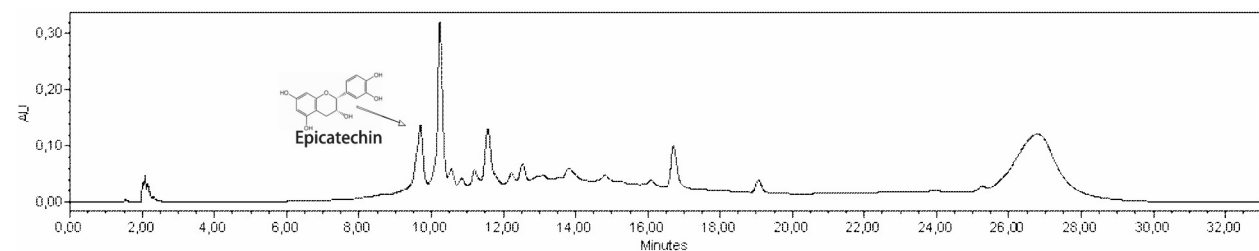


Figure 7S. Chromatographic profile of hydroalcoholic extract of *Maytenus ilicifolia*. Chromatographic conditions are described in the text. Sample sold as *espinheira santa* in Curitiba city

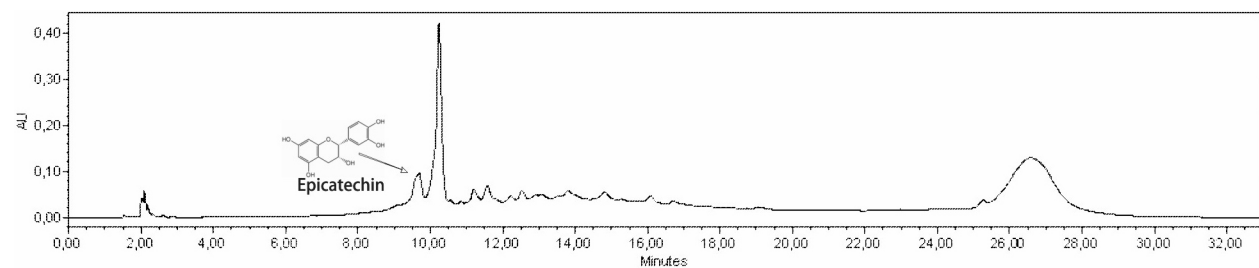


Figure 8S. Chromatographic profile of hydroalcoholic extract of *Maytenus ilicifolia*. Chromatographic conditions are described in the text. Sample sold as *espinheira santa* in Toledo city

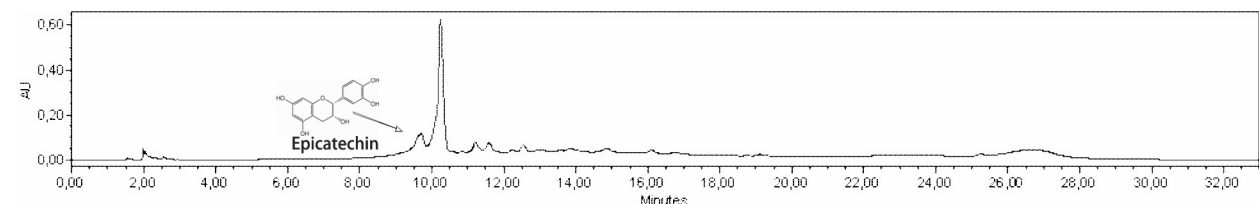


Figure 9S. Chromatographic profile of hydroalcoholic extract of *Maytenus ilicifolia*. Chromatographic conditions are described in the text. Sample sold as *espinheira santa* in Colombo city

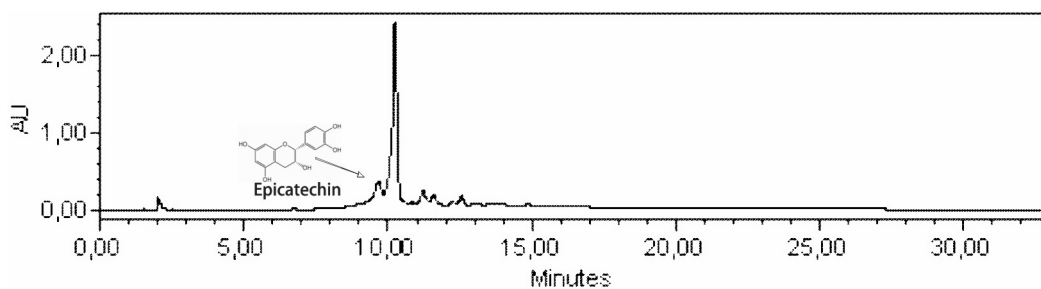


Figure 10S. Chromatographic profile of hydroalcoholic extract of *Maytenus ilicifolia*. Chromatographic conditions are described in the text. Sample sold as *espinheira santa* in Mandaguari city

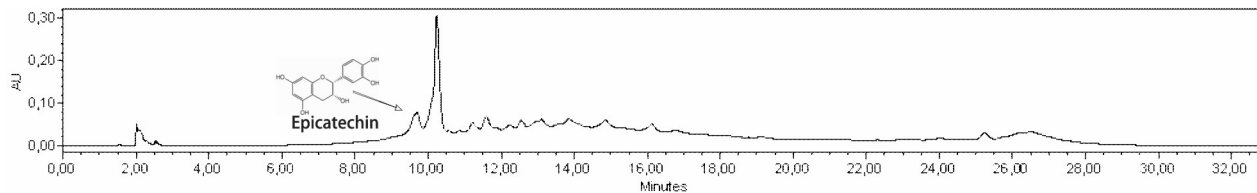


Figure 11S. Chromatographic profile of hydroalcoholic extract of *Maytenus ilicifolia*. Chromatographic conditions are described in the text. Sample sold as *espinheira santa* in Uraí city