

PHOTOCHEMICAL CHARACTERISTICS OF DICLOFENAC AND ITS PHOTODEGRADATION OF INCLUSION COMPLEXES WITH β -CYCLODEXTRINS

Minmin Qin and Haifeng Yang

School of Biology and Environmental Science, Shanghai Normal University, ShangHai 200234, PR China

Shengwen Chen*, Hongyong Xie and Jie Guan

School of Urban Development and Environment Engineering, Shanghai Second Polytechnic University, ShangHai 201209, PR China

Table 1S. Spectral energy distribution of mercury lamp

Wavelength nm	265.2~265.5	296.7	302.2~302.8	312.6~313.2	365.0~366.3	404.5~407.8	435.8	546.1	577.0~579.0
Energy %	15.3	16.6	23.9	49.9	100.0	42.2	77.5	93.0	76.5

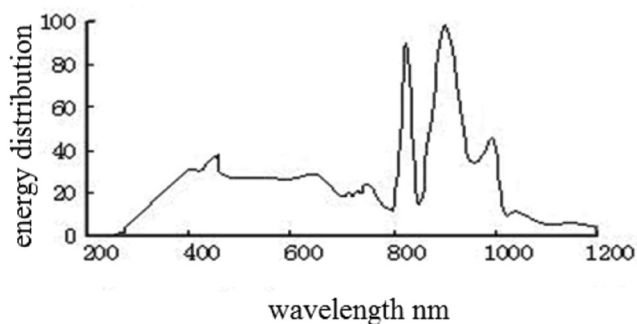


Figure 1S. Spectral energy distribution of xenon lamp

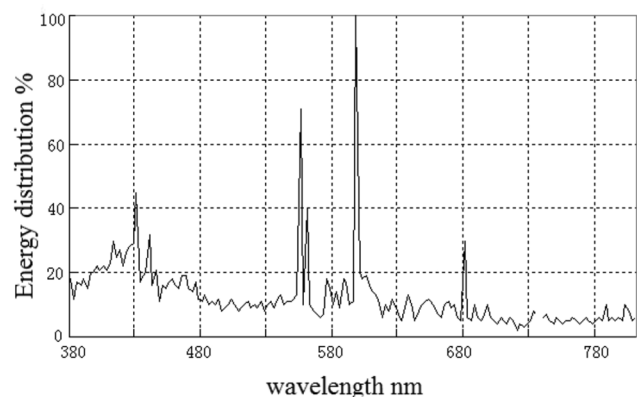
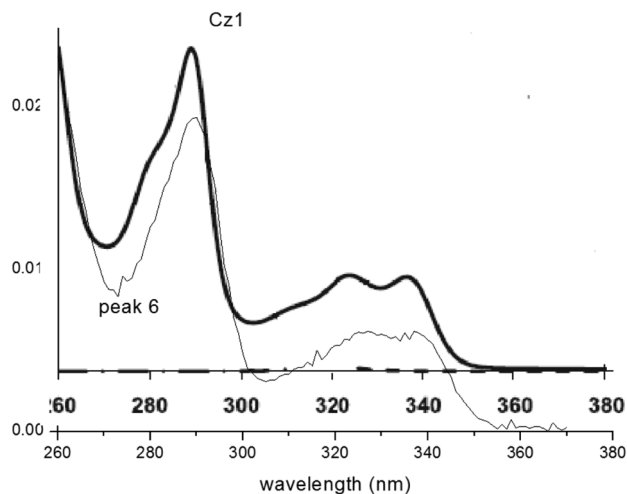


Figure 2S. Spectral energy distribution of halogen lamp



● Absorption spectrum of Cz1 was obtained from Figure 1 of ref. 22

Figure 3S. Comparison of UV spectra between peak 6 and Cz1